



Announcement: News for GBCers and Friends

As we get ready to enter our 98th season, I am pleased to announce some exciting news that I know will set us up for one of our best summers ever at GBC!

Many of you already know Sue Eckersley. Sue has been invaluable to us in her role as Assistant Director for the past two summers. This year I am proud to announce that Sue will assume the role of Camp Director of GBC. Together with the other members of the leadership team, Sue will play an instrumental role in managing the ongoing operations of the camp. Her enthusiasm for camping, and for GBC in particular will be a huge asset to our team.

You may know that Sue attended GBC for 14 consecutive years as a camper and then a staff member. She further broadened her experience working with youth through past employment with the Ontario Government as an Outdoor Recreation Instructor and Youth Worker, and in various volunteer roles within the community. More recently she has been the President/Owner of Watermark Communications which included being the Executive Director of the World Ski and Snowboard Festival, a world-renowned snow sport property, and directed several other successful events and campaigns. Her work with us for the past 2 summers as the assistant director has only served to reinforce her passion for GBC and her desire to ensure that we can offer an excellent camp program that will develop campers and staff into the leaders of the future.

I will continue as owner and Executive Director of GBC and be on site every camp day. Together with Sue and the rest of the leadership team, I look forward to watching this

next generation of leaders translate their experience and love of camping into an amazing offering for girls and young women.

Along with Sue and I, Jim Schmidt - Facilities and Kim Graydon - Communications, will also continue to play an instrumental role in the operation of GBC.

With regret and best wishes, we have another change to the leadership team. After more than two decades, Megan Snape, aka "Snaps" has made the decision to pursue other career opportunities. I want to sincerely salute and thank Megan for her significant contributions to GBC over the years. She has been the backbone of GBC administration and the development of organizational efficiency, with contributions to all aspects of GBC. The foundation that Megan leaves us has become an essential part of the way we operate at GBC and as a result of her efforts, we are well positioned for success going forward. Please join me in wishing "Snaps" all the best in her future endeavours.

So, while it still feels like summer is a long way off, it will be here before we know it! As we approach our 100th anniversary, I feel now more than ever, that GBC is one of the premier summer camps for girls in Canada. We can't wait to welcome the campers and staff to one of the best summers ever!

Cheers!

Joc

Jocelyn Palm
Executive Director
Glen Bernard Camp



WILFRID LAURIER UNIVERSITY VISITS GBC TO CONDUCT ENVIRONMENTAL STUDIES RESEARCH PROJECTS

Students in their third year of an Environmental Studies degree, along with their Professors, spent 3 days at GBC last September. The group all had one thing in common: the work they were about to embark on was of great importance so much so, they were missing Homecoming weekend!

GBC and the surrounding area is an ideal place for WLU students to choose from a number of different project ideas. 9 projects were identified.

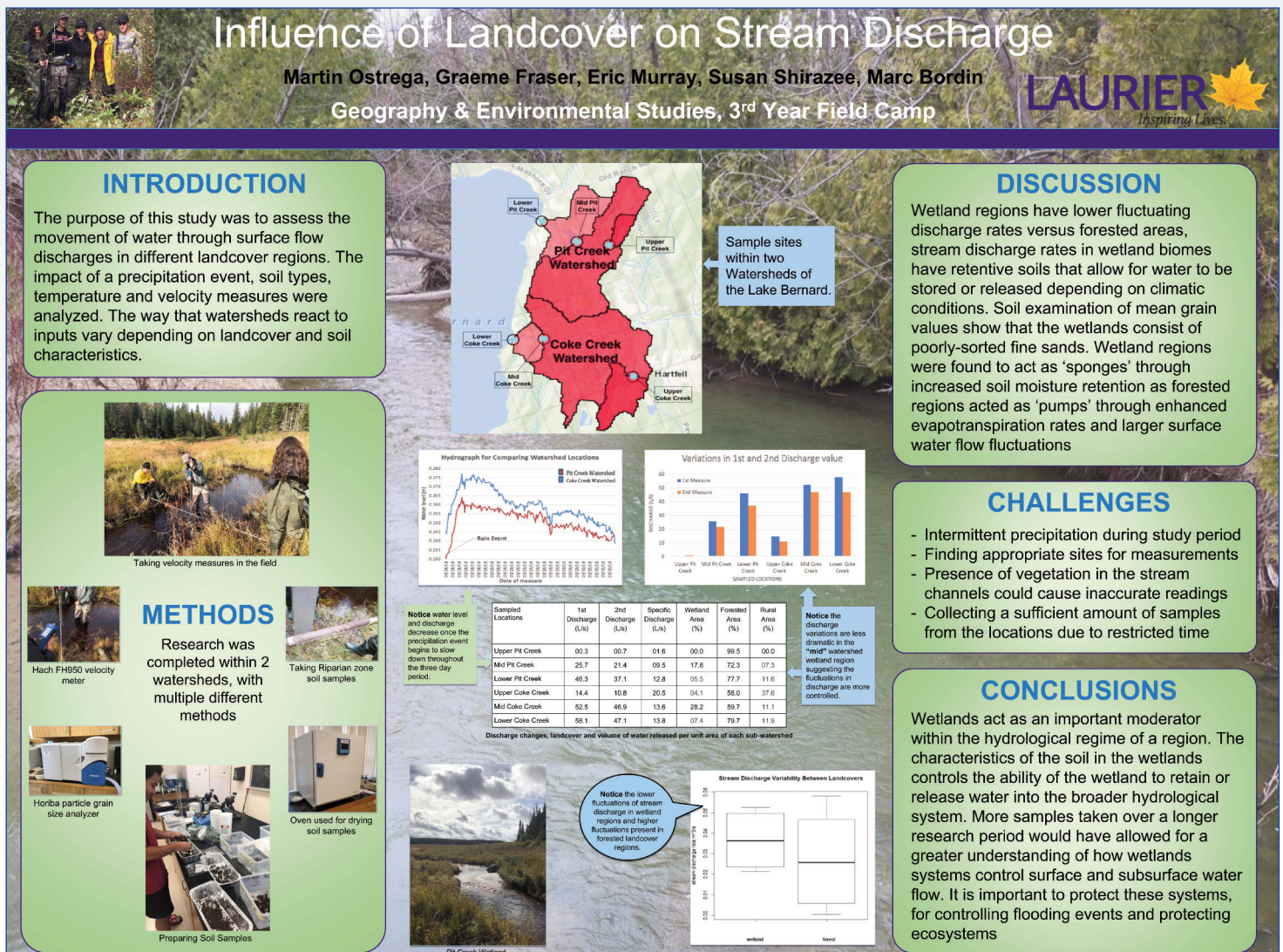
1. Stream Flow and Nutrient Analysis
2. Lake Water Quality Analysis
3. Forest Diversity
4. Dendrochronology
5. UAV (unmanned aerial vehicle) mapping
6. Citizen Science, focusing on Pollination
7. Urban Agriculture (Community garden in Sundridge)
8. Healthy, Local Foods
9. Nature, Physical Activity and Health

The enthusiasm and engagement of the students was inspiring to watch. The use of technology, combined with research methods, allowed the groups to take advantage of GBC's 730 acres of land. The groups produced posters that

outlined each of their studies. One poster (shown below) is about the influence of landcover on stream discharge. This project examined surface water flow rates as they change throughout stream systems. The intent was to examine ground-surface water interactions and ecosystem health taking into account the impact of precipitation, soil types, temperature and velocity measures.

Another poster examined tree species diversity and health. This project involved the design of a systematic inventory of the forest, the representative sampling of stratified sub-areas (e.g., flat areas vs slopes vs hilltops), and; the presentation of the results through maps and other means. With over 730 acres, the group had plenty of area to choose from. The result of which species of tree was the most resilient and had the highest potential for growth will allow for GBC to introduce other species of tree to encourage a more diverse forest.

We thoroughly enjoyed hosting the students and staff, watching the groups work, converse and socialize. It is our hope that Wilfrid Laurier students will return in 2019 and continue their very important research at GBC and around the lake!



SPOTLIGHT ON CAREER CONNECTIONS

BY SABRINA SALHIA

BEATRICE FUCHS, EXECUTIVE DIRECTOR AND CO-FOUNDER OF SEED CHANGE



Connecting to and working to grow the Seed Change Community

Beatrice Fuchs is changing the landscape one seed at a time. In her role as Executive Director and Co-Founder of Seed Change Tanzania, Beatrice is leading a program in the sustainable farming of palm oil. Seed Change Tanzania is a non-profit that helps farmers break the cycle of poverty through improved agricultural practices and sustainability training. Her mission is to educate farmers in Western Tanzania on the benefits of farming higher yielding palm seeds, in turn, reducing their deforestation and increasing their annual household incomes by 1000%. Assisting these smaller farming families drastically improves their quality of life, affords them better

life in Tanzania and hear how her camp experience aided her in developing this project.

Beatrice remarked “Ten years as a GBC camper taught me about leadership, responsibility to the environment and treating all people equally. In my daily work in Tanzania, I often think of lessons learned from GBC. My time at GBC instilled a level of confidence in me and knowledge of personal resilience, for which I am very grateful. Whether it was completing physical challenges (trip), developing new skills (all those levels!), or persevering in situations outside of my comfort-zone (being away from home), I was lucky to learn at a young age that we all have an inner strength from



Farmers hard at work tending to crops



A group Seed Change photo

educational opportunities for their children, and much needed home improvements.

This summer, the Pioneers and Leaders embarked on an inspiring, electronic trip to connect with a Beatrice in Kigomo, Tanzania via Skype. Campers watched a short video introduction to Beatrice’s sustainable palm oil farming project. They were then able to ask Beatrice about her daily

which we can be draw during difficult times. This is something I often return to in my work when I am faced with new challenges in a foreign environment. I am grateful for this knowledge and the role GBC played in my personal development. It is something I can always return to and through it I am able to serve others and do my part to make the world a better place”.

Beatrice’s dedication to her work has inspired us to salute her as the inaugural recipient of the new **Living Lightly Legacy Wall of Fame**. We hope to connect GBC’s campers with many more alumnae working on environmental and community initiatives next summer. Please get in touch if you or another alumnae you know would make for an awesome next addition to the Living Lightly Legacy Wall of Fame.

To learn more about Seed Change Tanzania and/or to donate to help Beatrice continue her important work, please visit www.seedchangetanzania.org/donate

A WEBSITE UPDATE!

For those of you who have seen our new website, we hope you have enjoyed the new look. If you haven't please take a peek!

Our website is often our first impression to those who are searching for a camp, in which to send their daughter. The new site has a large amount of information for a new family to digest. The aim was to help new families learn about our history, our values, our activities and ultimately why GBC is one of the best choices amongst female only camps in Ontario. We have created a blog on the site, which we will update on a regular basis.

A blog post we would like to include going forward is from the alumni perspective. What impact did camp have on you as a child? Have you sent your daughter to GBC? Why did you choose GBC? What has a camp experience given you to reference in your adult life? We would be grateful for each of you to write a few paragraphs about what Glen Bernard and a camp experience has done for you personally. These alumni guest blog posts will be included in our blog on a regular basis. If you have any photos you would like to send along to accompany the post that would be fantastic!

Our alumni are an amazing group of people and who better to speak, through a blog, to new families considering Glen Bernard for their daughter? As always, thank you for your ongoing support of GBC! For submissions, please contact Kim at: kim@gbcamp.com

GBC RECEIVES A WONDERFUL GIFT

Joan W. Parkes (nee Dixon) left us almost a year ago after a struggle with cancer. Her husband Joel and daughters Alice and Joanna have made a very generous contribution in her memory to GBC.

Joan was a terrific athlete and appreciated every moment in the outdoors. In high school she was games captain in her senior year at Bishop Strachan School and while at U of T, she competed in intercollegiate diving and skiing competitions. At GBC she mastered every activity and was a first class sailor. We were classmates at U of T when I began my initial involvement with GBC. Joan was Head of Sailing and those old wooden boats got a full workout each and every day whether it was a gale force wind or 'cats paws' to fill the sails. Her father was an avid sailor and he had a willing crew including Joan at the RCYC competitions. Joan had many good friends at GBC and each remembered her for her sincerity and kindness.

After Joan graduated from GBC, she had a career in laboratory research at U of T and the Hospital for Sick Children Research Institute. Her outdoor pursuits with Joel and their daughters continued for always and are special and memorable.

This gift in her memory will be directed to charging up our GBC sailing program and skills. It will be a perfect salute to Joan Parkes as GBCers sail over the bounding waves.

Joc



2019 Calendar of Events

- Period 1 • June 28 - July 18
- Period 2 • July 20 - August 9
- Alumni Canoe Trip • TBD
- Period 3 • August 11 - 24
- Fall Family Weekend • September 6 - 8
- Women's Weekend • September 13 - 15

TWO-WEEK SESSIONS: (ages 8 - 11)

- Period A • June 28 - July 11
- Period C • July 20 - August 2

ONE-WEEK SESSIONS:

- Period B (ages 6 - 8) • July 12 - July 18
- Period D (ages 6 - 8) • Aug 3 - Aug 9
- Period E (ages 6 - 8) • Aug 11 - Aug 17
- Period F (ages 11 - 13) • Aug 18 - Aug 24

BUNNY CAMP: (ages 4 - 6)

- Bunny 1 • July 12 - July 14
- Bunny 2 • August 3 - August 5

SPECIALTY SESSIONS:

- Canoe Trip 1 • July 12 - July 18
- Canoe Trip 2 • July 20 - July 26
- Canoe Trip 3 • August 3 - August 9
- Canoe Trip 4 • August 3 - August 9
- Young Keen Riders 1 • July 12 - July 18
- Young Keen Riders 2 • August 11 - August 17
- Aquatic Leadership 1 • July 20 - July 26
- Aquatic Leadership 2 • August 11 - August 17
- Wilderness Canoe Trip • August 11 - August 24
- Theatre Program • August 11 - August 24

Glen Bernard Camp
206 Lord Seaton Rd.
Toronto, ON
M2P 1K9

PH: 416 225 4166
FX: 416 225 6036
email : info@gbcamp.com
website: gbcamp.com

Glen Bernard Camp
2066 South Lake Bernard Rd.
PO Box 660, Sundridge, ON
P0A 1Z0

PH: 705 384 7062
FX: 705 384 0155
email: info@gbcamp.com
website: gbcamp.com